

122 Main Street
Sayville, NY 11782

www.patchworks.com

 **Patchworks**
We'll be winding a bobbin for you!

August 2009

631-589-4187

Visit us anytime at
www.patchworks.com

STORE HOURS

Monday - 12 noon-6pm

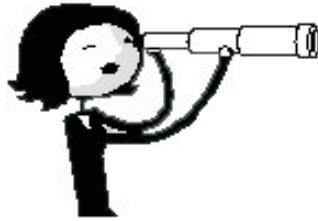
Tues-Fri - 10am 6pm

Sat - 10am 5pm

Closed Sundays

HERE'S THE FINE PRINT

Class size is limited to 6 to 8 students, so register as soon as possible. Full payment of class fee is required at time of registration. Refunds are given if you notify us no later than one week prior to the start of the class. Patchworks reserves the right to cancel a class due to insufficient enrollment. If we cancel a class your money will be refunded. Lists of other tools and sewing supplies are available at time of registration. Most supplies are available for purchase at Patchworks. Machines are available for use during class. Please let us know when signing up if you require a class machine. (Please note that most classes require "homework" that involves the use of a sewing machine!) Beginning classes do not require any quilting skills. Intermediate classes assume you have taken a beginner's class and know how to rotary cut and finish a quilt. Ask which classes would be best for you.



Take note!

Tuesday Club in August will take place on August 11th, the *second* Tuesday in August. See you then!

Coming in August...

✂ A hands-on workshop to make the Rapid Fire Hunter's Star quilt using Deb Tucker's Hunter's Star tools! If you missed the opportunity to come to Deb Tucker's presentation, now's your chance to get in on the fun! If you have the tools, and need that little push to get started, this is it!

✂ Have you seen the adorable holiday projects we have in the store? Starting this month (and continuing through the next few months!) we'll have classes on putting these together. Look for the Pinwheel Wreath in August and in September we'll have classes on the Stick Santa, Snowman, Witch, Scarecrow... your choice!

✂ Want to jazz up a quilt but not sure how? Gloria's *Beautiful Borders* class will show you how to add creative borders to your quilt top for an extra special touch!

✂ The Two-Hour Tulip Purse is one of our most popular patterns. If it's been on your to-do list and you need a little jumpstart to get going, check out the Two-Hour Tulip Purse Workshop on Saturday, August 29 from 10:30 to 4pm. The workshop requires a minimum amount of pre-class work but once you get sewing, it won't be long before your very own Tulip Purse is complete!

✂ Bertha put together an absolutely adorable pinwheel quilt using a package of Hoffman Bali Pops plus a background fabric. Make it in one of the softer colors for a baby quilt or choose one of the new Hoffman Bali Pop colors and keep it for yourself!

✂ **DON'T FORGET! THIS MONTH ONLY, TUESDAY CLUB WILL BE HELD ON THE SECOND TUESDAY OF THE MONTH, AUGUST 11th! We'll see you then!**

AUGUST CLASSES

Sunday	Monday	Tuesday	Wednesday	Thursday	Friday	Saturday
						1 SAYVILLE SUMMERFEST
2 SAYVILLE SUMMERFEST	3 BEGINNING PATCHWORK 12:30-3pm BLACK & WHITE JACKET #3 6-8:30pm	4 SCRAP THERAPY CUTTING WORKSHOP 10:30am BEGINNING PATCHWORK 6-8:30pm	5 BLACK & WHITE JACKET #3 10:30-1pm	6	7	8 EMBROIDABLOCK 10:30-11:30am Eq6 1-3pm
9	10 BEGINNING PATCHWORK BLACK & WHITE JACKET #4 6-8:30pm	11 TUESDAY CLUB* BEGINNING PATCHWORK	12 BLACK & WHITE JACKET #4 10:30-1pm	13 BEAUTIFUL BORDERS 10:30-1pm or 6-8:30pm	14 PINWHEEL WREATH 10:30-1pm	15 RAPID FIRE HUNTER'S STAR WORKSHOP 10:30-4pm
16	17 BEGINNING PATCHWORK SCRAP THERAPY: PICK YOUR OWN! 6-8:30pm	18 BEGINNING PATCHWORK SCRAP THERAPY: PICK YOUR OWN! 10:30-1pm	19 BERTHA'S PINWHEELS 10:30-1pm OR 6-8:30pm	20 BEAUTIFUL BORDERS	21 PINWHEEL WREATH	22 MARJEN FOR ERROR QUILT #2 10:30-1pm
23	24 BEGINNING PATCHWORK	25 THIMBLEBERRIES CLUB BLOCK #8 10:30-11am BEGINNING PATCHWORK	26 BERTHA'S PINWHEELS	27 BEAUTIFUL BORDERS	28 ONCE UPON A STAR #5: SEALED WITH A TWIST 10:30-4pm	29 TWO HOUR TULIP PURSE 10:30-4pm
30	31					

BEGINNING PATCHWORK Our Beginning Patchwork class introduces the beginner quilter to the basics of quilt making including rotary cutting, machine piecing and finishing. The class fee includes Patchworks' **Party Mix** pattern and a Patchworks' Packet (up to a \$27 value) for the Party Mix quilt top. Beginner. Mondays, August 3, 10, 17 & 24 12:30-3pm **OR** Tuesdays, August 4, 11, 18 & 25 6-8:30pm \$98

THIMBLEBERRIES CLUB 2009: 3'S COMPANY Get together with the Club for a quick demonstration on putting together the blocks and a chance to win a Thimbleberries' door prize! Can't make the meeting? Don't worry! Your block is available for pick up anytime afterwards. Cost for each block is \$15. Block #8 Tuesday, August 25 10:30. Initial membership fee is \$60 and includes Block #1. Get Block #12 FREE after purchasing Blocks #2 - #11.

MARJEN FOR ERROR MarJen for Error is a quilt where the worlds of traditional patchwork, quilting, 21st century computerized embroidery and stitching collide! The resulting explosion is a quilt created by the united energy of time-tested history and the promise of the future. The classes will meet monthly to allow time to complete each section. Intermediate. Saturdays, July 25, August 22, September 12 & October 17 10:30-1pm \$98

ONCE UPON A STAR: BLOCK #5 SEALED WITH A TWIST We simply could not resist McKenna Ryan's Once Upon A Star series! Each block can be made as a separate wall hanging or as part of a larger quilt. (The class will be geared towards creating the entire quilt.) This month's project is Block #5 Sealed With A Twist. Workshop requires pre-class preparation and advanced machine appliqué skills. Class fee includes the pattern. Kits for the quilt top and border are also available while supplies last. Friday, August 28 10:30-4pm \$60

EMBROIDABLOCK BLOCK OF THE MONTH Combine piecing with embroidery to produce a look of elegance and add interest to your quilts. Whether a novice or master quilter, this method of quilting uses little or no math, requires minimal cutting, is innovative, fun and results in every block not only sewn to perfection but quilted in the hoop as well! Come join us to have some fun and learn this new quilt technique using your embroidery machine. Session #7 Saturday, August 8 10:30-11:30 \$15

SCRAP THERAPY CUTTING WORKSHOP Finally! Here's the way to change your stash from overflowing piles into neat and tidy stacks all ready the scrap quilt you've been planning for so long! The Scrap Therapy Cutting Workshop is a prerequisite for any Scrap Therapy Quilt class. Confident beginner and up. Tuesday, August 4 10:30am \$15

BEAUTIFUL BORDERS Learn how to add borders to your quilt to create a different look for each row! Gloria will demonstrate different border techniques and treatments. Confident beginner and up. Thursdays, August 13, 20 & 27 10:30-1pm **OR** 6-8:30pm \$68

PINWHEEL WREATH Impress your friends with this beautiful wreath! Sew easy-to-make prairie points to create the dimensional look. Confident beginner and up. Fridays, August 14 & 21 10:30-1pm \$48

RAPID FIRE HUNTER STAR WORKSHOP We've had a lot of requests for a hands-on workshop using Deb Tucker's Rapid Fire Hunter's Star too. Here's your chance to see just how easy it is to create one of these stunning quilts! Intermediate. Saturday, August 15 10:30-4pm \$50

TWO-HOUR TULIP PURSE If you've had this great little purse on your list of "things to do" now's the chance to sit down and sew one out for yourself! Available in four sizes (yes, the larger sizes take a little longer!). Fun and fast! Intermediate. Saturday, August 29 10:30-4pm \$50

BERTHA'S PINWHEELS Bertha created this adorable quilt using one package of the Hoffman's Bali Pops and background fabric that lets the pinwheels pop! Fun quilt to make for a little one! Confident beginner and up. Wednesdays, August 19, 26 & Sept. 2 10:30-1pm OR 6-8:30pm \$68

SCRAP THERAPY: PICK YOUR OWN! Now that you've gotten your scraps in line, pick your own favorite Scrap Therapy pattern to create! Choose from *Bloomin' Steps*, *Runaway Thread*, *Neapolitan Quilt*, or any of the newest patterns now available. Remember, the Cutting Workshop is a prerequisite for these classes. Confident beginner and up. Mondays, August 17 & September 14 6-8:30pm OR Tuesdays, August 18 & September 15 10:30-1pm \$30

ARE YOU IN THE KNOW?

So, you think you know quilting? Write your answer to the question of the month and drop off the entry form at the Patchworks. Who knows? You may be the next winner of a \$25 Patchworks' Gift Certificate. Good luck!

AUGUST TRIVIA

Inlay applique is another term for what type of applique?

Email _____ Phone _____

Name _____



20%

SAVE! SAVE! SAVE!

Off any one book, pattern or notion*

Name _____

Address _____

Email/Phone _____

*Excludes fabric, machines, software (including embroidery CDs), furniture, special order items, sale items, gift certificates and classes. Coupons must be presented at time of purchase. Not valid on prior purchases. Name and address must be filled out for coupon to be valid. One per customer. Offer valid August 1-31, 2009